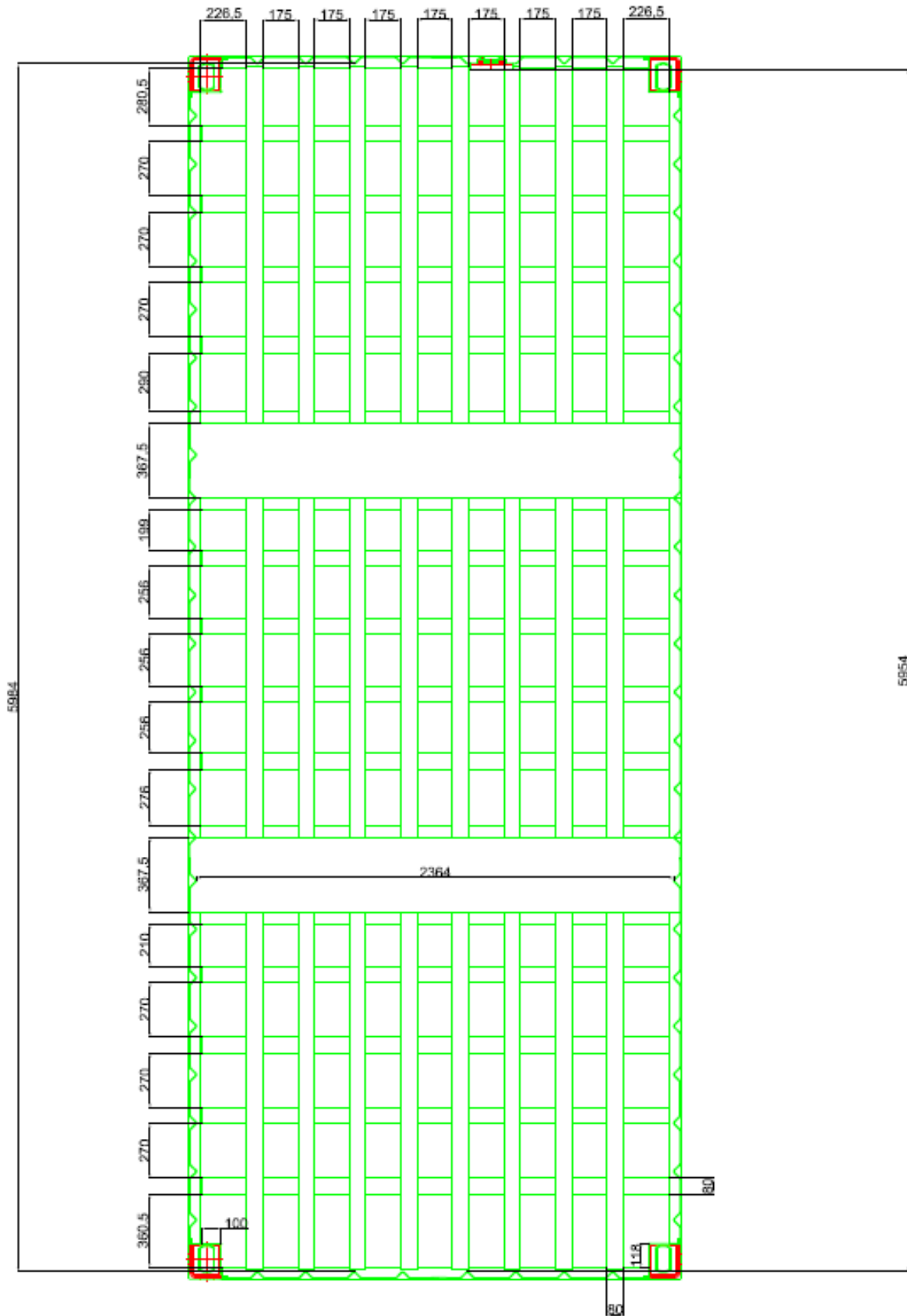


Technical Data Sheet For

Package Reference: IP-2/TC03



Package Colloquial Name	Third Height ISO (THISO)		
Operating Instruction	OM_0102940_MECH_00001_F		
Dimensions (internal)	Length	Width	Height
Usable Internal Dimensions (Excluding under lattice grid base) See figure for details	5994 mm (wall to wall) 5954 to vent port shield	2364 mm	661 mm
Lid Opening	5442 mm	1902 mm	
Dimensions (external)	6058 mm	2438 mm	880 mm
Vent Port Height	608mm (from base) 466mm (from grid lattice)		
Payload Capacity	31,670 kg		
Tie down capability to the base	Ref: PAAGN004		
Lid Bolts Torque	170Nm ± 10Nm		
Grout and Vent Port Bolts Torque	38Nm ± 10Nm		
Tare Weight	2860 kg without overlid 3200 kg with overlid		
Maximum Gross Weight	35,000 kg		
Max Internal Volume in m³ for Grout/Direct Pour Encapsulation (up to vent port)	8.58 m ³		



Usable Internal Dimensions