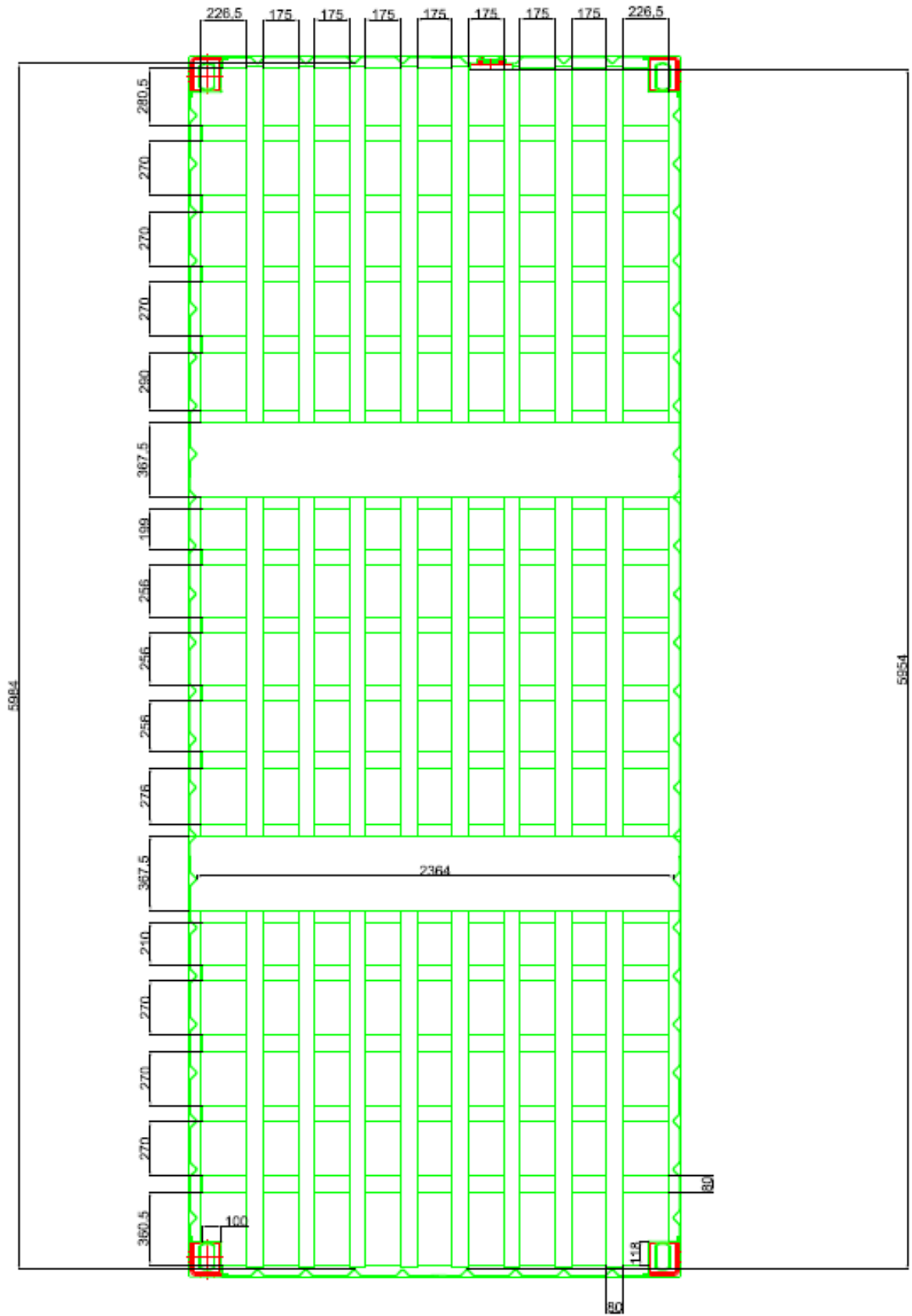


Technical Data Sheet For

Package Reference: IP-2/TC01



Package Colloquial Name	2910C Half Height LLW ISO Container		
Operating Instruction	OM_LLWRGR_MECH_00007_A		
Dimensions (internal)	Length	Width	Height
Usable Internal Dimensions (Excluding under lattice grid base) See figure for details	5994 mm	2364 mm	1106 mm
	5954 mm to vent port shield		
Lid Opening Dimensions	5442 mm	1902 mm	
Dimensions (external)	6058 mm	2438 mm	1320 mm
Vent Port Height	1053mm (from base) 901mm (from grid lattice)		
Payload Capacity	31,920 kg		
Tie down capability to the base	Ref PAA/GN04		
Lid Bolts Torque	170Nm \pm 10Nm		
Grout and Vent Port Bolts Torque	38Nm \pm 2Nm		
Tare Weight	3,080 kg		
Maximum Gross Weight	35,000 kg		
Max Internal Volume in m³ for Grout/Direct Pour Encapsulation (up to vent port)	14.75 m ³		



Usable Internal Dimensions