


**SCHEDULE 1: MINIMUM MONITORING REQUIREMENTS FOR THE
TC02 RE-USABLE TRANSPORT CONTAINER**

Summary

This Guidance Note highlights the specific measurements and suggested survey record sheets for the TC02. It should be completed following the further information in Guidance Note 5, the minimum monitoring requirements for re-usable transport containers

Nothing in this Schedule shall be legally binding upon the Operator of the LLW Repository Ltd and the Terms and Conditions between the Operator and the Customer for the use of the LLW Repository Ltd IP-2 ISO supplied containers.

Issue Number		1
Issue Date		5th January 2012
From	To	
	Until	Reviewed
Prepared by: 		Ash Matthews RPA LLW Repository Ltd
Checked by: 		Andrew Laker RPA LLW Repository Ltd
Approved by: 		Marc Flynn Transport & Logistics Manager LLW Repository Ltd

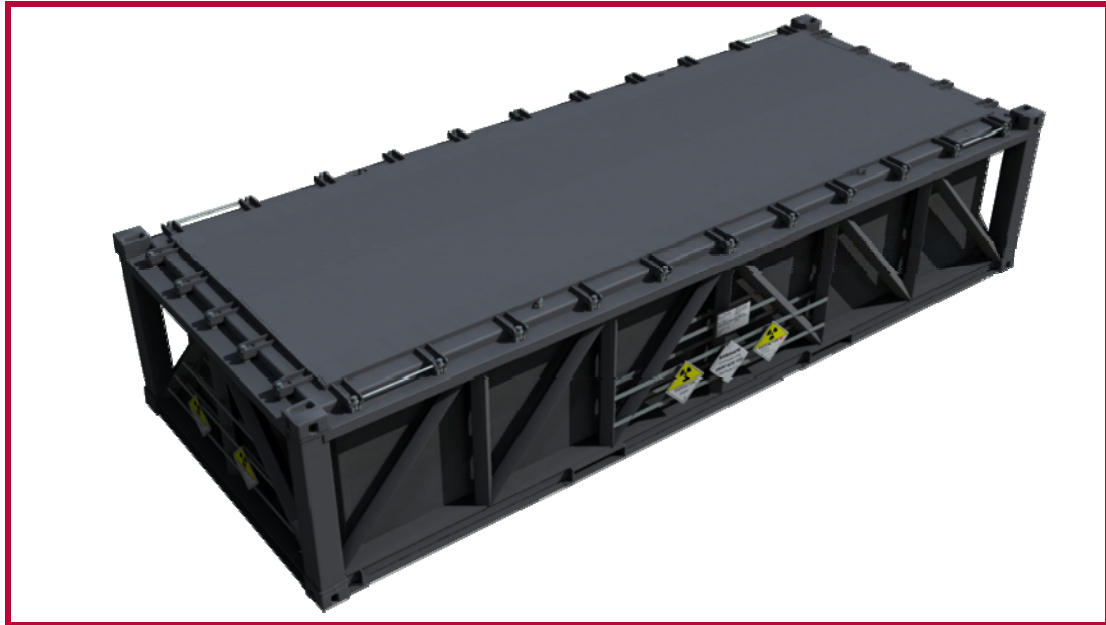
INDEX

Introduction 3

Schedule 1 - TC02 MONITORING FORM – TC02/MON/001 4

Introduction

This schedule details the requirements we expect from consignors and treatment operators to ensure that the radiological clearance procedure for consignment of the TC02 are robust, consistent and standardised.



The TC02 was specifically designed to facilitate being thoroughly monitored both internally and externally. The container has been designed to be used on a “start clean”, “stay clean” philosophy and this is reflected through the monitoring protocols which are adopted.

For any queries please contact the LLW Repository Ltd Transport and Logistics Team www.transportandlogistics@llwrsite.com

LLWR TC02 MONITORING FORM REF TC02/MON/001			SITE DESPATCHING/RECEIVING: _____					
TC02 serial no.		Date / Time of Survey		Receipt/Despatch <small>*delete as applicable</small>	Stillage Serial no(s)		Empty/Full/Part Full <small>*delete as applicable</small>	Page 1 of 7

Schedule 1 - TC02 MONITORING FORM – TC02/MON/001

Guidance Notes for Monitoring

- All Sections are to be completed
- All readings are to be recorded with the Background deducted
- The “ < ” symbol is not to be used, the actual measured reading is to be recorded
- Beta contamination levels are to be recorded to 1 decimal place i.e. 0.0
- Alpha contamination levels are to be recorded to 2 decimal places i.e. 0.00
- Radiation readings are to be recorded in µSv/h
- The location description required in column 3 refers to the swab positions. In all cases, the highest probe reading position should be where swabs are taken from. Notwithstanding this, where no significant probe readings are measured, swabs should still be taken and recorded
- All swabs required by form TC02/RP/001 are to be taken over 300 cm²
- Where column 4 asks to mark the position, this refers to the position of the swabs taken. The positions should be marked by marking the point reference number on the relevant part of the diagrams in pages 4 – 6
- Side “A” refers to the side of the TC02 where the vent port and CSC plate is present. The other sides are labelled alphabetically in an anticlockwise direction. The vent port and CSC plate are the only features that distinguish the different sides of the TC02
- On page 6, diagram of the stillages, each stillage should also be marked with the feature that distinguishes the orientation of the stillage
- Multiple page 7’s may be used; one page 7 should be used for each individual item loaded into the TC02. The sketch and detail should be sufficient to clearly identify the item at the receiving site

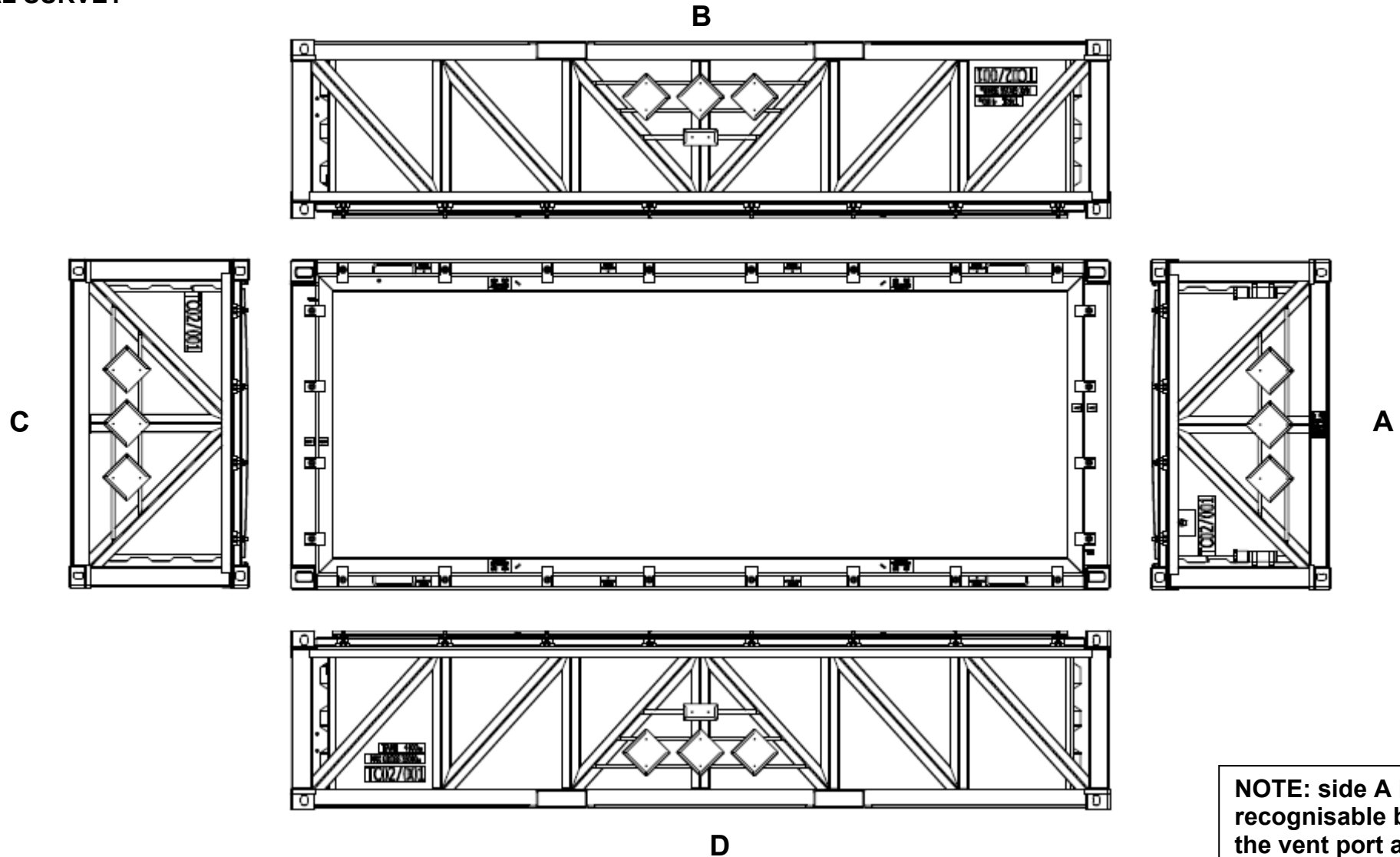
LLWR TC02 MONITORING FORM REF TC02/MON/001				SITE DESPATCHING/RECEIVING: _____		
TC02 serial no.		Date / Time of Survey		RECEIPT / DESPATCH <small>*delete as applicable</small>	Stillage Serial no(s)	Page 2 of 7

<u>Probe/ratemeter type</u>	<u>Ser no.</u>	<u>Calibration date</u>	Monitors Name (PRINT):	Team Leader Name:
<u>Scaler type</u>	<u>Ser no.</u>	<u>Calibration date</u>	Monitors Signature:	Team Leader Signature:
<u>Dose ratemeter type</u>	<u>Ser no.</u>	<u>Calibration date</u>		

Point	Required for Receipt	Location Description	Notes	Probe alpha Bq/cm ²	Probe beta Bq/cm ²	Swab alpha Bq/cm ²	Swab beta Bq/cm ²
	“ • “	NOTE – Side A has Vent port. B,C,D follow anticlockwise	<i>Mark position of swab measurements on appropriate diagram where applicable using point numbers.</i>				
		TC02 EXTERNAL					
1	•	Side A and C, 1 point random	Mark positions, record highest				
2	• (1 point)	Side B external 2 points random	Mark positions, record highest				
3	• (1 point)	Side D external 2 points random	Mark positions, record highest				
4	• (1 point)	Lid, topside, 2 points random	Mark positions, record highest				
5		Lid, lifting eyes	Monitor each and record highest				
6		Lid clamps, 4 clamps random	Mark clamps, record highest				
7		Lid Seal area, 4 points	Mark positions, record highest (prior to lid fitting)				
8	• (1 point)	Lid channel, 4 points	Mark positions, record highest				
9	• (1 point)	Lid Underside, 4 accessible points	Record highest measurement				
10	•	FLT pockets as accessible x 4	Record Highest (remove any residual dirt prior to taking swab)				
11	•	Base corner casting x 4	Mark and record highest				
		TC02 INTERNAL					
12	•	Side A and C, 1 point random	Mark position, record highest				
13	• (1 point)	Side B internal 2 points random	Mark position, record highest				
14	• (1 point)	Side D internal 2 points random	Mark position, record highest				
15	• (1 point)	Internal Base 3 points random inc corners	Mark positions (one from each third of base)				
16		Internal stillage fixing bridge, 4 of 8	Mark each chosen, record highest				
17		Internal corners A/B	Swab from base to top in corner				
18		Internal corner B/C	Swab from base to top in corner				
19		Internal corner C/D	Swab from base to top in corner				
20		Internal corner D/A	Swab from base to top in corner				

LLWR TC02 MONITORING FORM REF TC02/MON/001			SITE DESPATCHING/RECEIVING: _____			
TC02 serial no.		Date / Time of Survey	RECEIPT / DESPATCH <small>*delete as applicable</small>	Stillage Serial no(s)		Page 4 of 7

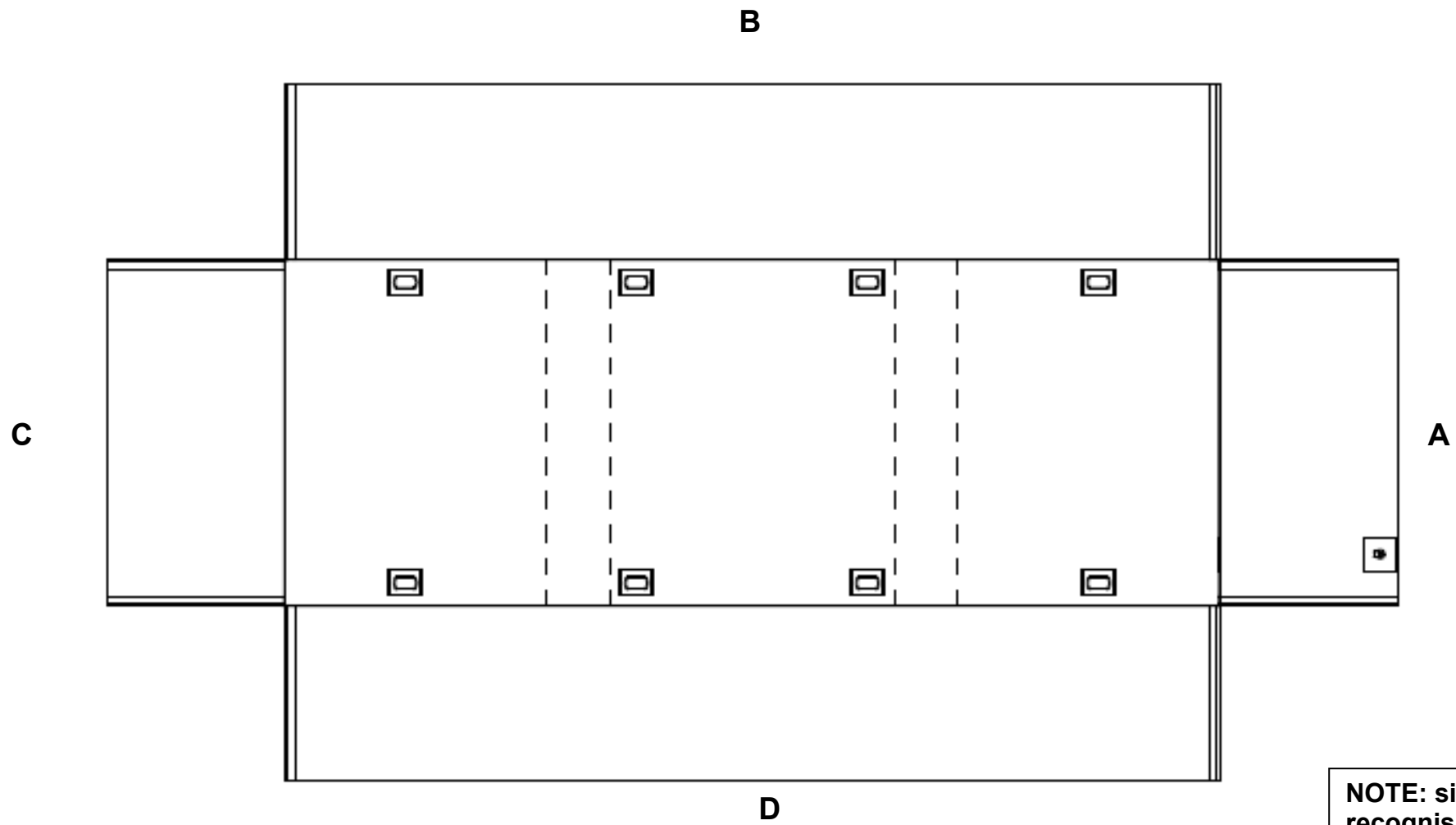
EXTERNAL SURVEY



NOTE: side A is recognisable by the vent port and CSC plate

LLWR TC02 MONITORING FORM REF TC02/MON/001			SITE DESPATCHING/RECEIVING: _____			
TC02 serial no.		Date / Time of Survey		RECEIPT / DESPATCH <small>*delete as applicable</small>	Stillage Serial no(s)	Page 5 of 7

INTERNAL SURVEY



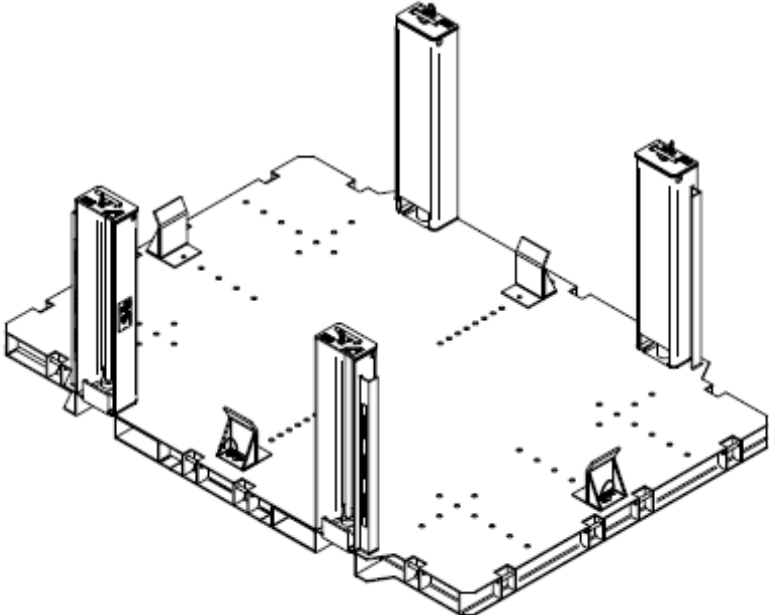
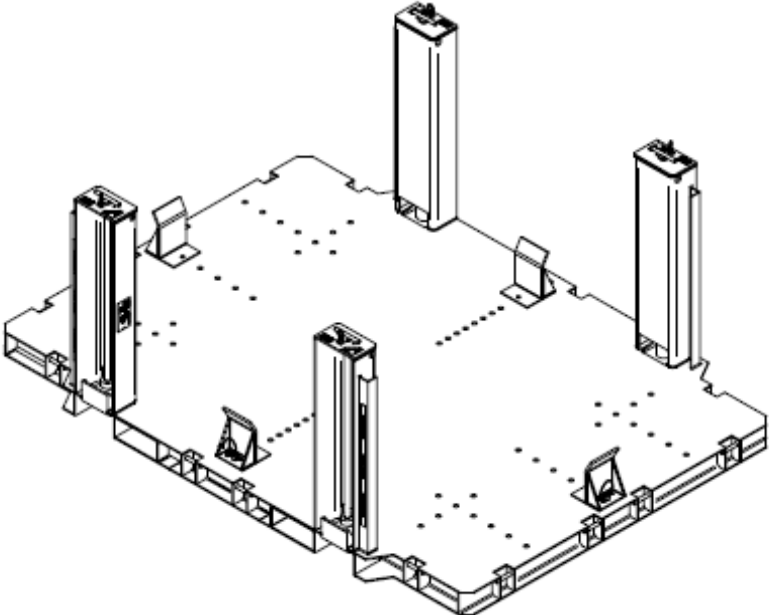
NOTE: side A is recognisable by the vent port and CSC plate

LLWR TC02 MONITORING FORM REF TC02/MON/001			SITE DESPATCHING/RECEIVING: _____		
TC02 serial no.		Date / Time of Survey	RECEIPT / DESPATCH <small>*delete as applicable</small>	Stillage Serial no(s)	Page 6 of 7

STILLAGE

Serial No. _____

Serial No. _____



LLWR TC02 MONITORING FORM REF TC02/MON/001				SITE DESPATCHING/RECEIVING: _____			
TC02 serial no.		Date / Time of Survey		RECEIPT / DESPATCH <small>*delete as applicable</small>	Stillage Serial no(s)		Page 7 of 7

INDIVIDUAL ITEMS: ADD ADDITIONAL FORMS AS REQUIRED FOR EACH INDIVIDUAL ITEM

Notes: Provide one sheet per item with a sketch and description of the inner container / item and highest radiation readings marked