

Loading Plan

| | | | |
|------------------------|---------------------------------|------------------|--------------------|
| Title: | Loading Plan Type 1000 Dolavs | Reference | PAAGN04/Schedule 7 |
| Date | 23 rd September 2011 | By: | J. Langham |
| Calculation ref | LLWR/PAAGN004/CALC/005 | Issue | 1 |

1. Box Dimensions

| Item | Size (L x W x H) | Max Weight (kg) |
|----------------|---------------------|-----------------|
| 1000 Dolav Box | 1.6m x 1.2m x 0.74m | 1200 |

2. Equipment requirements

The following table shows how many chocks and strap pairs are required for different weights of box.

| Mass, M (kg) | Number of Chocks in each Direction | Lateral Strap Pairs | Strap Locations | Longitudinal Strap Pairs | Strap Locations |
|--------------|------------------------------------|---------------------|--|--------------------------|-----------------|
| 100 | 2 | 2 | Box 1 A1, A8, D1, D8 Box2 E1, E8, H1, H8 Box 3 I1, I8, L1 L8 | 0 | |
| 700 | 2 | 2 | Box 1 A1, A8, D1, D8 Box2 E1, E8, H1, H8 Box 3 I1, I8, L1 L8 | 0 | |
| 1200 | 3 | 2 | Box 1 A1, A8, D1, D8 Box2 E1, E8, H1, H8 Box 3 I1, I8, L1 L8 | 0 | |

Table 1

3. Method

Loading of Dolav boxes shall be in a manner to prevent free movement of contents during transport operations. The centre of gravity of the container shall be within the prescribed limits, as defined in Section 7 of the Packaging and Handling instructions for the TC01, TC03 and TC09 container (OM_010290_MECH_00001_E).

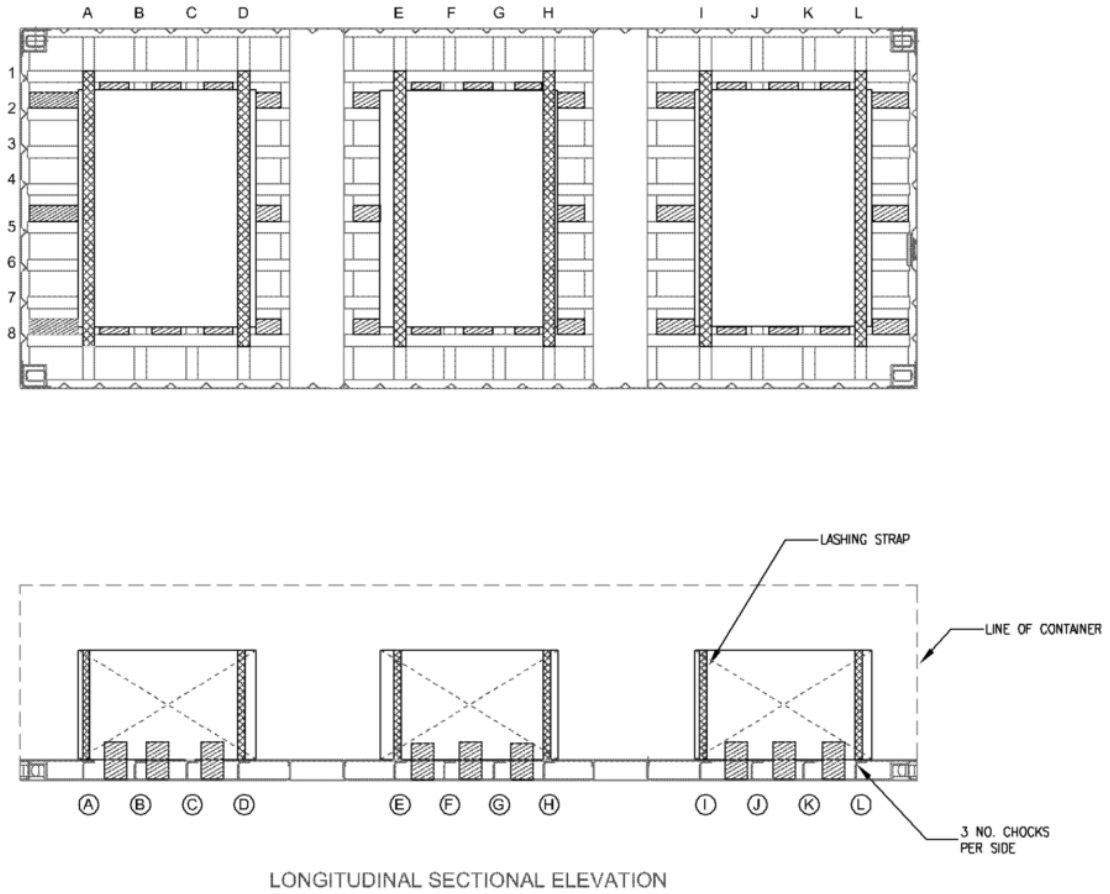
The straps for each box shall be fastened to the locations presented in Table 1 depending on what weight the boxes are.

Each strap shall be fixed to the grid lattice in accordance with Part F in Guidance Note PAAGN004.

Place the Dolav boxes into the container. The box shall be placed in the same location as is detailed in Figure 1.

Once the boxes have been placed in the container fit chocks between the box and the grid lattice. The chocks shall fit securely between the box and the grid lattice.

To complete the securing of the box within the container fix the opposing straps to each other and tighten them to ensure they are secure. Hand force (500N max) is only permitted when tensioning the strap. Mechanical aids such as levers, bars etc. are not to be used as extensions unless they are part of the tensioning device.



DOLAV 1000 BOX

Figure 1