

Loading Plan

| | | | |
|------------------------|--------------------------------------|------------------|---------------------|
| Title: | Loading Plan Type 1000 Dolavs Filled | Reference | PAAGN04/Schedule 11 |
| Date | 23 rd September 2011 | By: | J. Langham |
| Calculation ref | N/A | Issue | 1 |

1. Box Dimensions

| Item | Size (L x W x H) | Max Weight (kg) |
|----------------|---------------------|-----------------|
| 1000 Dolav Box | 1.6m x 1.2m x 0.74m | 1200 |

2. Equipment requirements

The equipment that is required to Load and secure the container is as follows:

- Suitable blocking for the container as shown in figure 1. Approx dimensions are as follows (L x W x H):
 - 2 blocks 5980mm x 380mm x 370mm
 - 2 blocks 1600mm x 590mm x 370mm
- Sufficient lifting straps for lifting the boxes into and out of the container

3. Method

Loading of Dolav boxes should be in a manner to prevent free movement of contents during transport operations. The centre of gravity of the container shall be within the prescribed limits, as defined in Section 7 of the Packaging and Handling instructions for the TC01, TC03 and TC09 container (OM_010290_MECH_00001_E).

Place the Dolav boxes into the container. The boxes shall sit up against the container walls as shown in in Figure 1. Note the lifting straps that are used to lift the boxes into the container shall remain with the boxes to enable removal of the boxes at the receiving facility.

Once the boxes have been placed in the container fit blocking between the boxes and the container wall where appropriate. The blocking shall be as a minimum half way up the boxes. The blocking shall fit securely between the boxes and the container wall where appropriate.

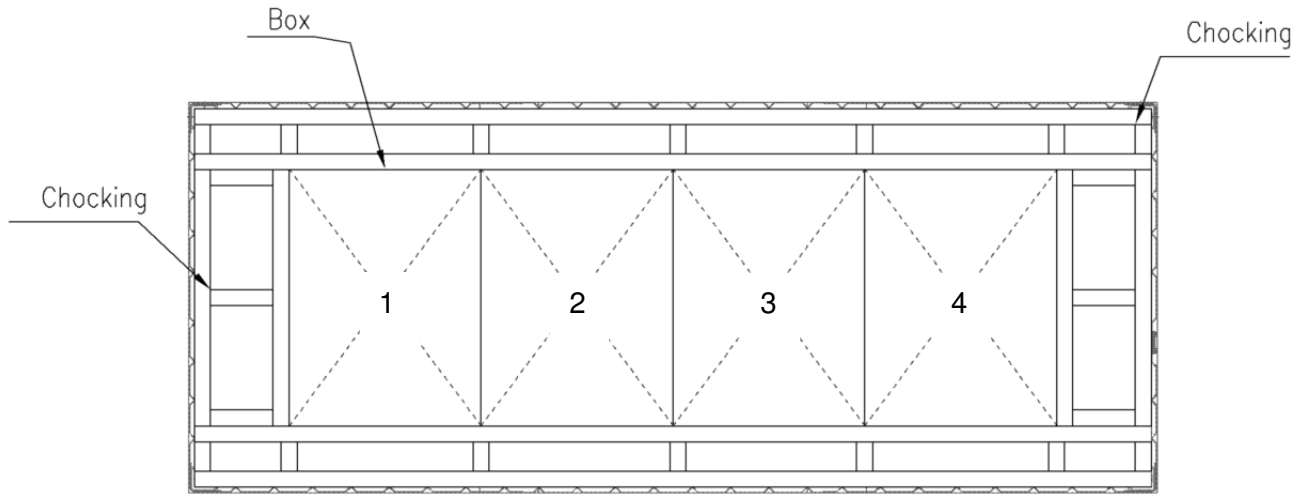


Figure 1