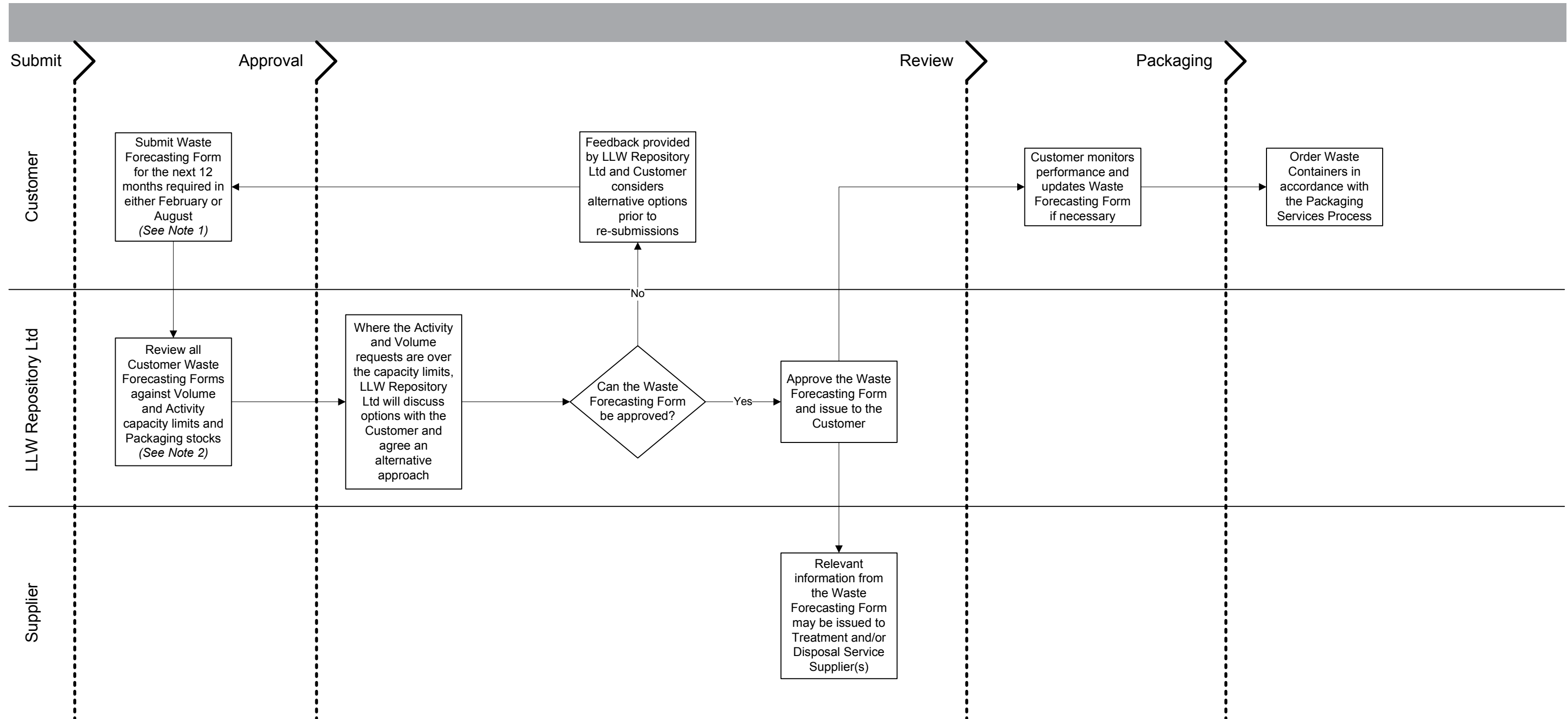


Waste Acceptance Procedure



Notes:

1. A Waste Forecasting Form is submitted twice a year, once before 28th February for the period 1st April to 31st March and before 31st August for the Period 1st October to 30th September
2. LLW Repository Ltd will consider all Customer Waste Forecasting Forms against the relevant capacity limits prior to approving a request from a specific Customer