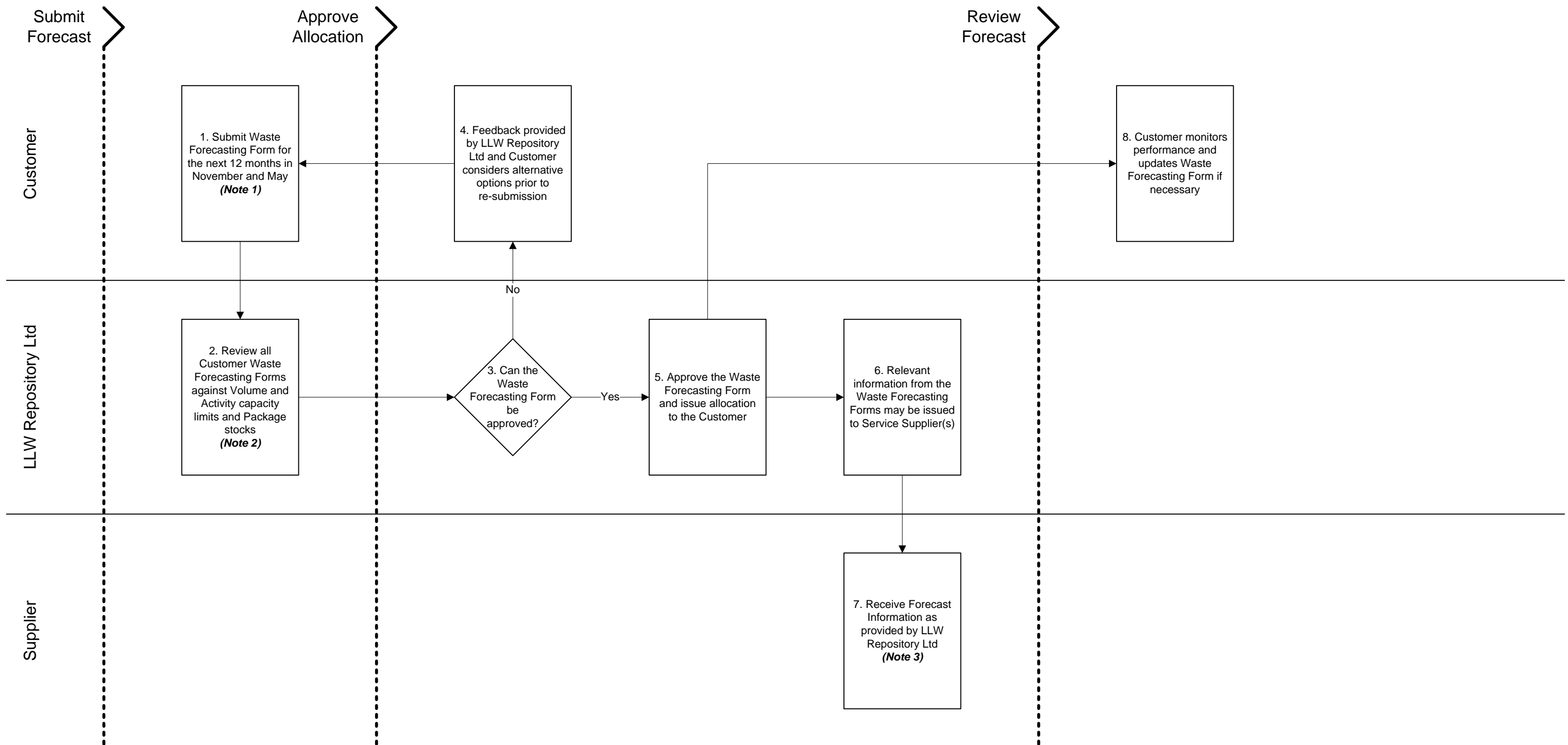


Waste Acceptance Procedure

Notes:

1. A Waste Forecasting Form is submitted twice a year, once before 30th November for the period 1st January to 31st December and again before 31st May for the Period 1st July to 30th June.
2. In order to identify areas of oversubscribed allocation, LLW Repository Ltd will compare the sum of all Waste Forecasts against the Repository's annual radiological capacity limits, prior to approving a request from a specific Customer.
3. Suppliers include those providing Packaging Services. LLW Repository Ltd encourage Customers to place packaging orders as early as possible to ensure stock availability. Orders should be placed in accordance with the Packaging Services Process.