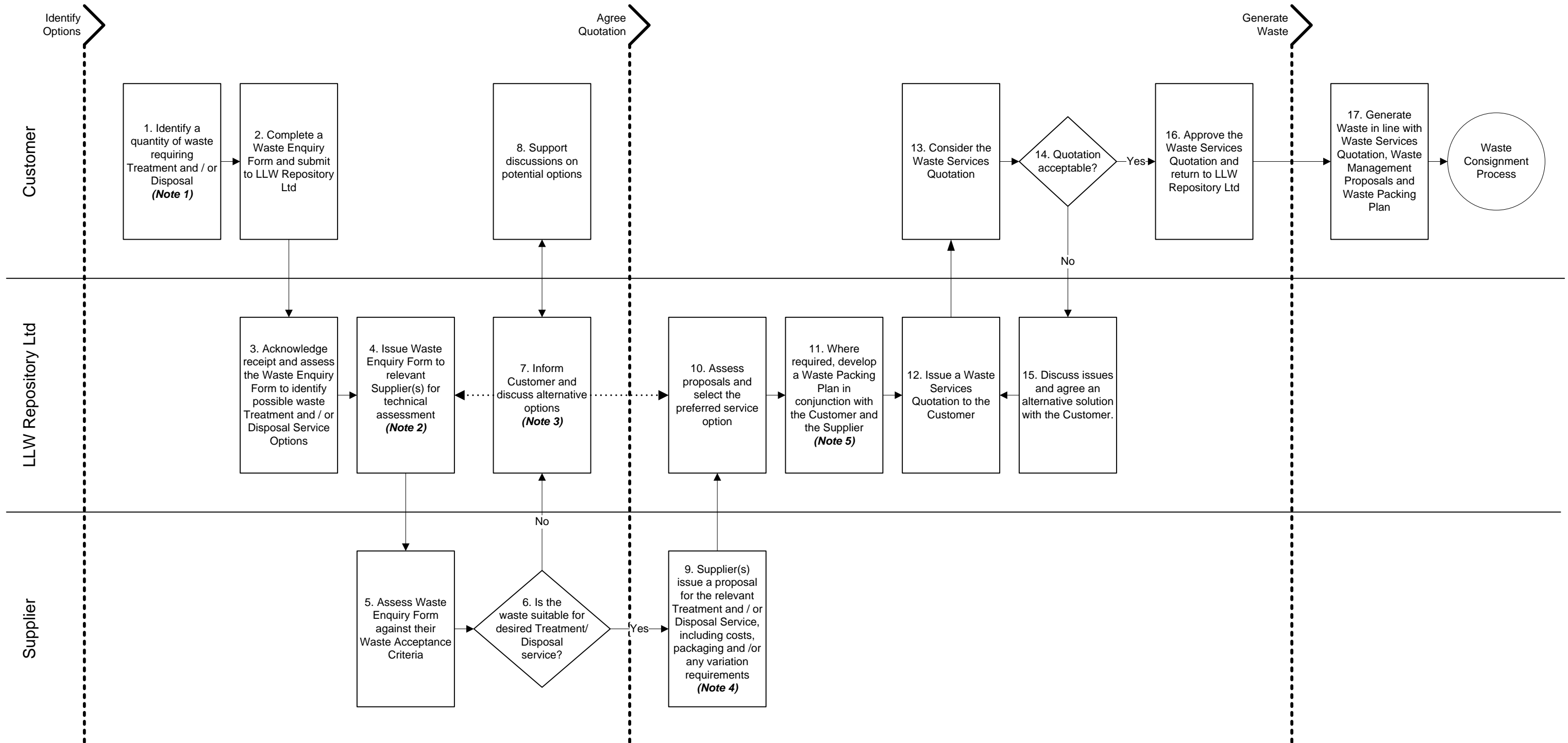


Waste Acceptance Procedure

Notes:

- LLW Repository Ltd encourages Customers to discuss their waste treatment and disposal needs and objectives at an early stage, in order to generate more accurate waste service proposals.
- LLW Repository Ltd will carry out the technical assessment for the Supercompactable Waste Treatment and Low Level Waste Disposal Services.
- At this stage there may be opportunities to segregate the waste in a different way or pre-treat the waste to allow the proposed service to be utilised. Alternatively, the waste might be suitable for a different treatment or disposal service. Due to the variability of the outcome two routes emerge from this step.
- Any potential variations to the Waste Acceptance Criteria that would be required to support a particular waste service option will be identified at this stage. This is intended to support Customers to prepare Waste Consignment Variation Forms during the Waste Consignment Process.
- Waste Packing Plans will only be required for the Metallic Waste Treatment Service where it is necessary to identify how waste will be packaged, in order to support the retrieval of the waste for treatment and any onward transportation of a consignment by LLW Repository Ltd.