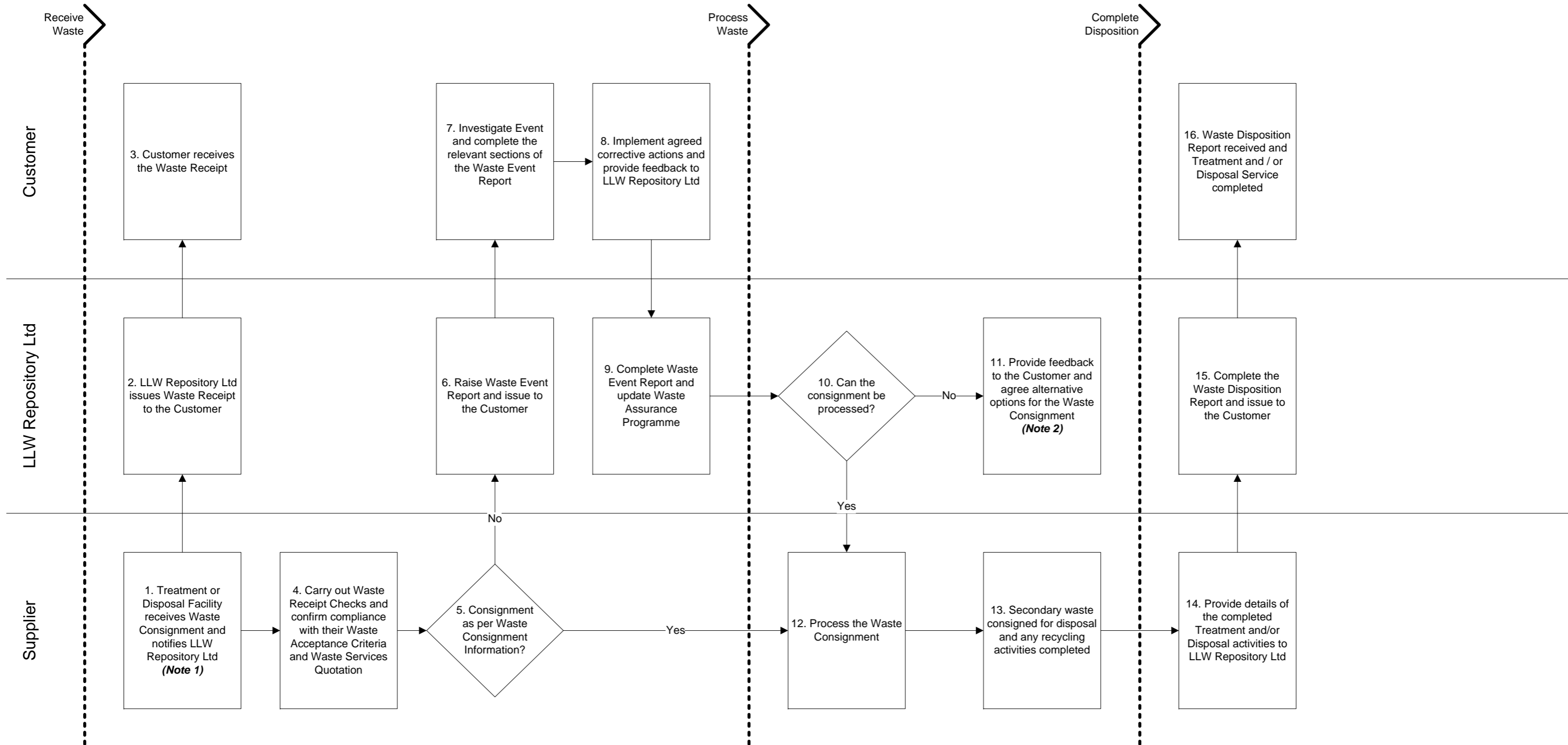


Waste Acceptance Procedure



Notes:
 1. For consignments delivered for disposal at the Low Level Waste Repository or for storage prior to onward transfer, the responsibilities and steps in the LLW Repository Ltd and Supplier lanes will be completed by LLW Repository Ltd.
 2. At this stage there are many options available to the Parties to progress the consignment. Following agreement by all Parties a route for treating and / or disposing of the waste can be progressed. Once the route is understood the consignment will jump to the appropriate stage of the Waste Acceptance Procedure.