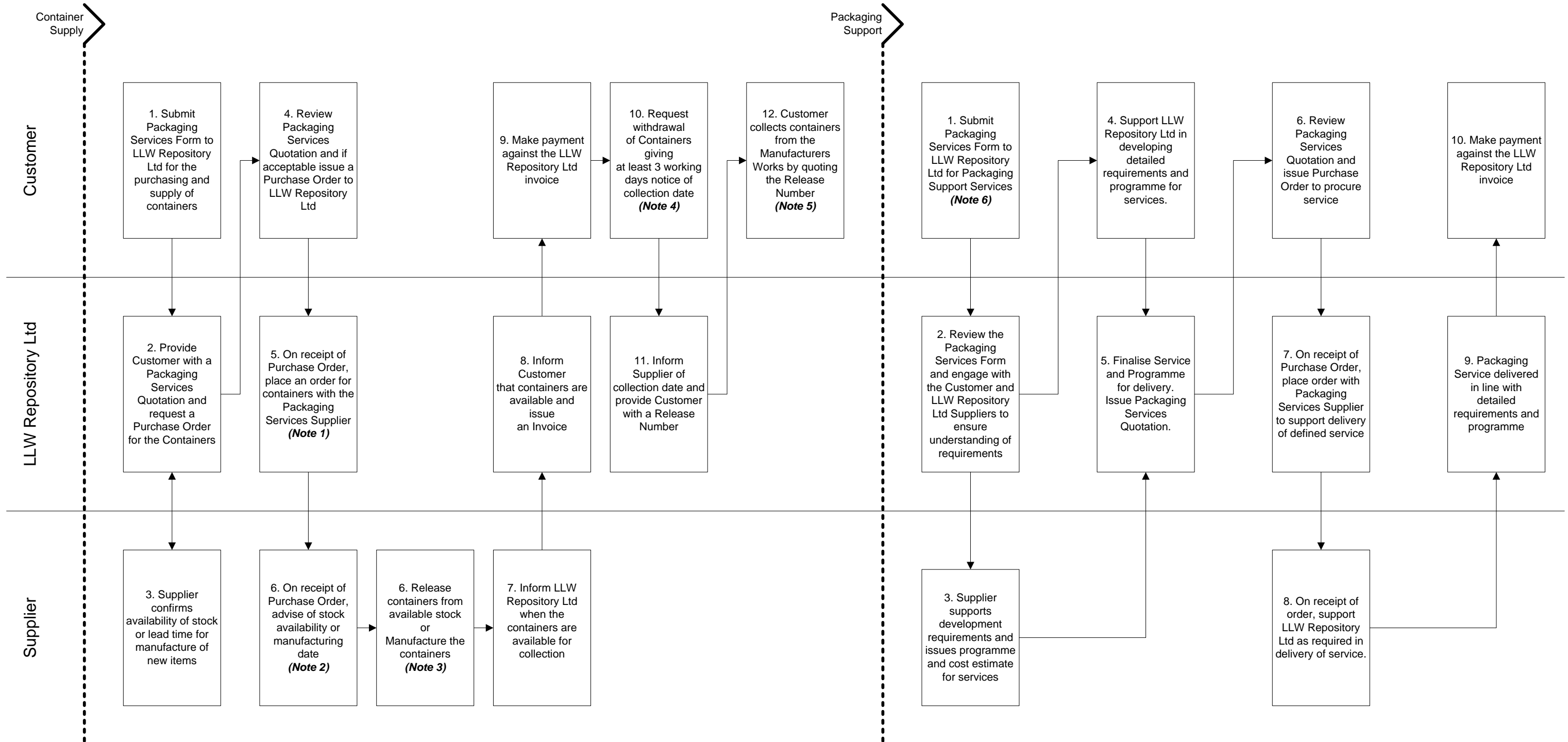


Packaging Services



Notes:

1. Containers will only be ordered on receipt of a valid Purchase Order from the Customer
2. Standard Container Types (e.g. 2910C - HHISO or 2989 - THISO) are likely to be available from stock depending on quantity required
3. Any non-standard container types will be manufactured to order and this may take up to 3 months
4. Containers can be collected from the Supplier after an invoice has been issued by LLW Repository Ltd but prior to the invoice being paid
5. Containers are supplied with a valid Certificate of Approval and a Packing and Handling Instruction.
6. LLW Repository Ltd encourages early engagement with Customers to understand their Packaging Support Services requirements. LLW Repository Ltd can support Customers in completing a Packaging Services Form.